

FRESH FACE

Find inspiration in nature's kaleidoscopic palette for dynamic summer beauty moments.

PHOTOGRAPHY BY **CARLOS + ALYSE**

MODELS: **AYOMIKUN** (ANOTHER SPECIES) AND **JULIANNA** (NEXT MODELS) MAKEUP BY **SIMONE OTIS** (P1M)

HAIR BY **JUSTIN GERMAN** (P1M) USING PANTENE STYLING BY **HALEY DACH** PROP STYLING BY **CHAD BURTON** (PLUTINO GROUP)

TEXT BY **DAVID SARIC** MANICURE BY **NARGIS KHAN** (P1M/TIPS NAIL BAR) MAKEUP ASSISTANT: **LATEISHA GRANT**



Mellow Yellow

To achieve an effortlessly striking eyeshadow look, begin by applying KVD's Good Apple Skin Balm Foundation with a beauty sponge or foundation brush in a tapping or patting motion to achieve a desired coverage. With a fluffy eyeshadow brush, carve out the crease using Liberation from KVD's Beauty Vegan Love Eyeshadow Palette, then apply Activist from the same palette at the inner corner of the eyelid, blending toward the centre where the two pigments meet. As a finishing touch, apply a swipe of CHANEL's Rouge Allure Laque in Inflexible for a lasting pop of colour.

Dress by 3.1 Phillip Lim; earrings by Chopard.





Ochre Shimmer

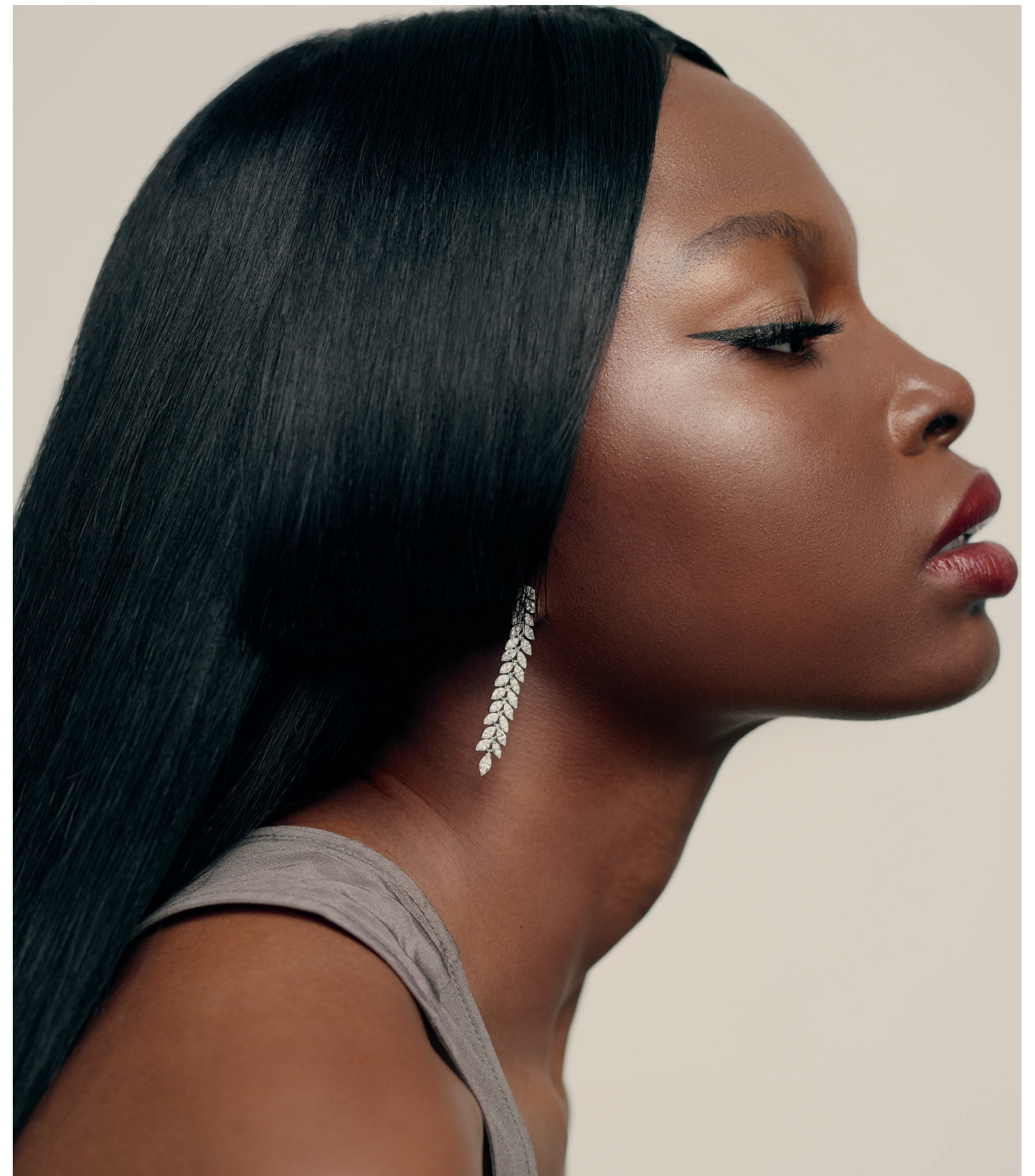
Earthen tones complement one's natural beauty quite effortlessly. Apply the medium shade from Dior's 5 Couleurs Couture Summer Dune Palette with a small eyeshadow brush, followed by the darker shade along the lash line with an eyeliner brush. To complete the look, use the lightest shade on the brow bone and inner corner of the eye for striking definition.

Earrings by Van Cleef & Arpels.



Elegant Opacity

A richly hued lip will always make a statement. To create a custom colour, begin by applying KVD's Studded Kiss Crème Lipstick in Nayeon, mixing in a scant amount of the brand's Super Pomade Pigment in Power Green until your desired shade is achieved. Build up a bold cheek with Nars's Air Matte Blush in Torch for a complementary crimson hue.



Walk the Line

A bold black eyeliner will never go out of style. Using the tip of Fenty Beauty's Flyliner Longwear Liquid Eyeliner in Cuz I'm Black, draw an outline of your desired shape. Then, measure out a small amount of CHANEL's Les Beiges Water-Fresh Tint in Deep on the back of your hand, using a brush to mix it, and apply to the face in circular motions.

Dress by Silk Laundry; earrings by Tiffany & Co.



Tropical Delight

Enliven your face with hues reminiscent of succulent fruits. Start with Shiseido's Synchro Skin Radiant Lifting Foundation, using a damp sponge or foundation blush to apply. Opt for a translucent setting powder for a smooth and even surface, followed by Laura Mercier's Colour Infusion Blush in Watermelon, building the colour to your desired intensity with a blush brush.

Earrings by BVLGARI.



Green Gaze

For an electrifying eye moment, start with a small eyeliner brush, dipping into the Earthling shade from KVD's Beauty Vegan Love Eyeshadow Palette to outline a desired shape, patting on more colour for greater opacity. To further sculpt the look, use a blush or contour brush to apply CHANEL's Healthy Glow Bronzing Cream in Deep Bronze just below the cheekbone, starting from the ear and ending in the middle of the cheek, with a back-and-forth motion.

Top by HUGO; earrings by Cartier.